

Federal Funds for CTE

Jay Ramsey
Assistant Director, Student Pathways Division

May 12, 2021



NORTHWEST CAREER & TECHNICAL CENTER



COLD HOLLOW CAREER CENTER
Skills . Pride . Excellence



NORTH COUNTRY CAREER CENTER



Lyndon INSTITUTE

BURLINGTON TECHNICAL CENTER



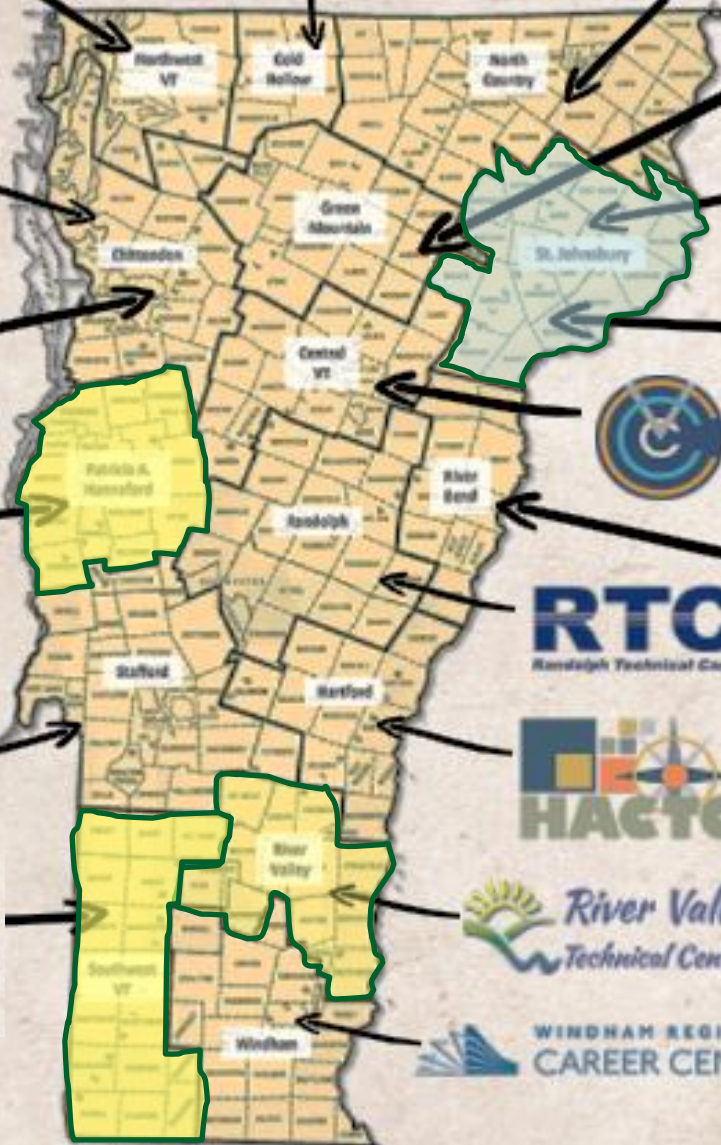
CENTER FOR TECHNOLOGY, ESSEX



PATRICIA A. HANNAFORD CAREER CENTER



SOUTHWEST TECH



RTCC
Randolph Technical Career Center

RIVERBEND
Career and Technical Center

HACTC

River Valley
Technical Center

WINDHAM REGIONAL
CAREER CENTER

CARES ACT

Elementary and Secondary
School Emergency Relief
(ESSER)

Governor's Emergency
Education Relief (GEER)

Coronavirus Relief Fund
(CRF)

Elementary and Secondary School Emergency Relief (**ESSER**)

- \$28 million
 - Funds made available to LEAs
 - 12 centers hosted by LEAs
 - LEAs determine how funds are distributed
 - May include CTE center
 - AOE is reminding LEAs to engage CTE centers on these funds

Governor's Emergency Education Relief (**GEER**) fund

- Eligibility – follows Perkins eligibility
 - Includes independent CTE districts
 - Caledonia County
- Allocation
 - \$4.48 million (\$200k at AOE to administer)
 - Allocations based on poverty and broadband access
- Through 9/30/22
- Alignment across emergency programs
 - Covers costs not covered by other programs

Governor's Emergency Education Relief (**GEER**) fund

- 4 Categories of Allowable Costs
 - Personnel
 - Additional COVID-19 related duties, extra days
 - Staff salaries for work on emergency response
 - Illness
 - PD
 - Technology Infrastructure
 - Instructional Costs
 - Other
 - Ex: vehicle to transport project supplies

Governor's Emergency Education Relief (**GEER**) fund

- Funded Activities
 - Tools, Equipment, Supplies
 - Additional Staffing
 - Transportation
 - Additional Classroom Space
 - Recruiting Practice Changes

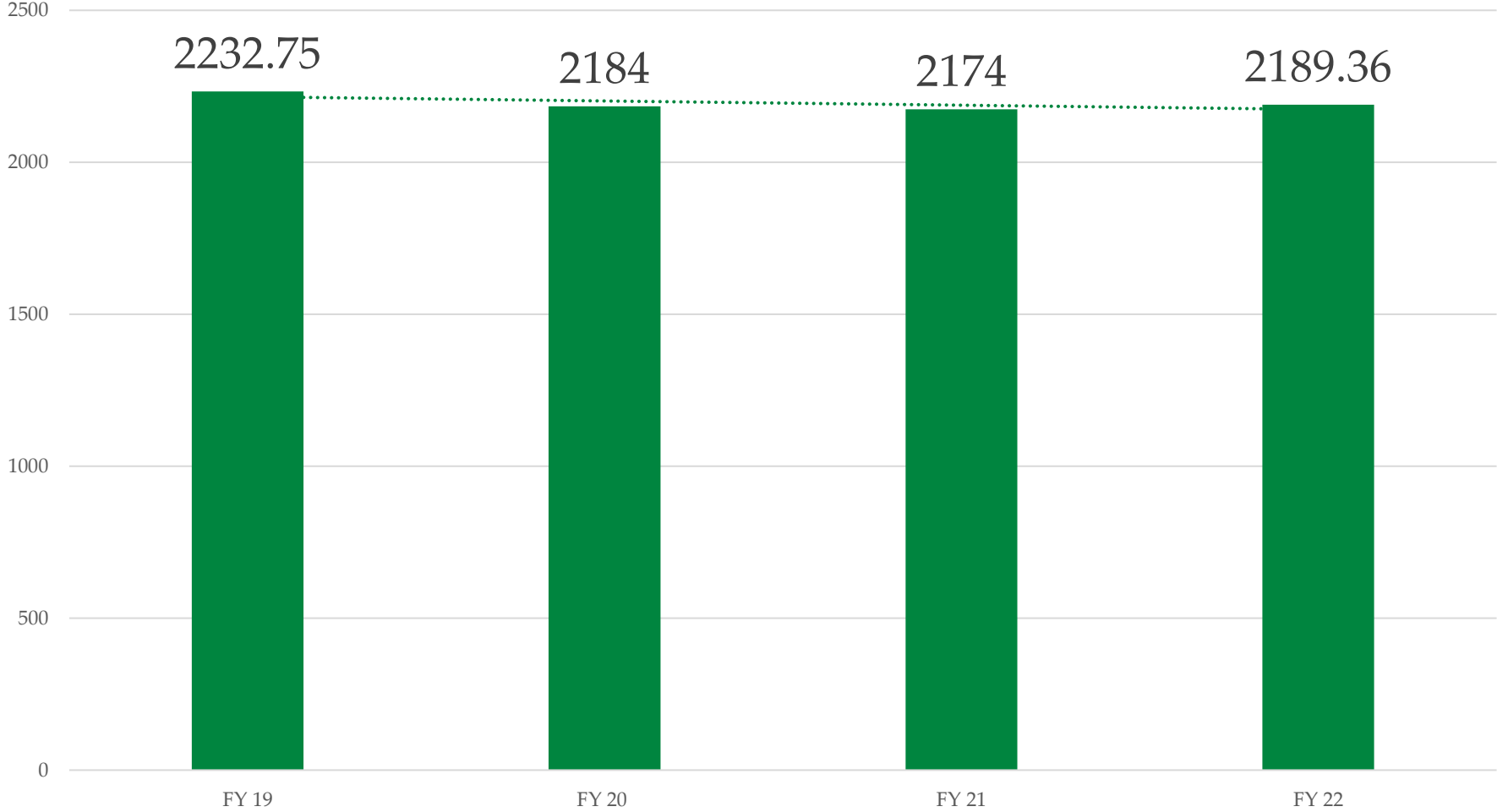
Coronavirus Relief Fund (CRF)

- Eligibility
 - Special provisions in Acts 120 and 154 included 3 technical center school districts
- Allocations
 - Bennington - \$65,601.00
 - Springfield - \$155,267.28
 - Middlebury - \$172,351.63
- Expires 12/31/21

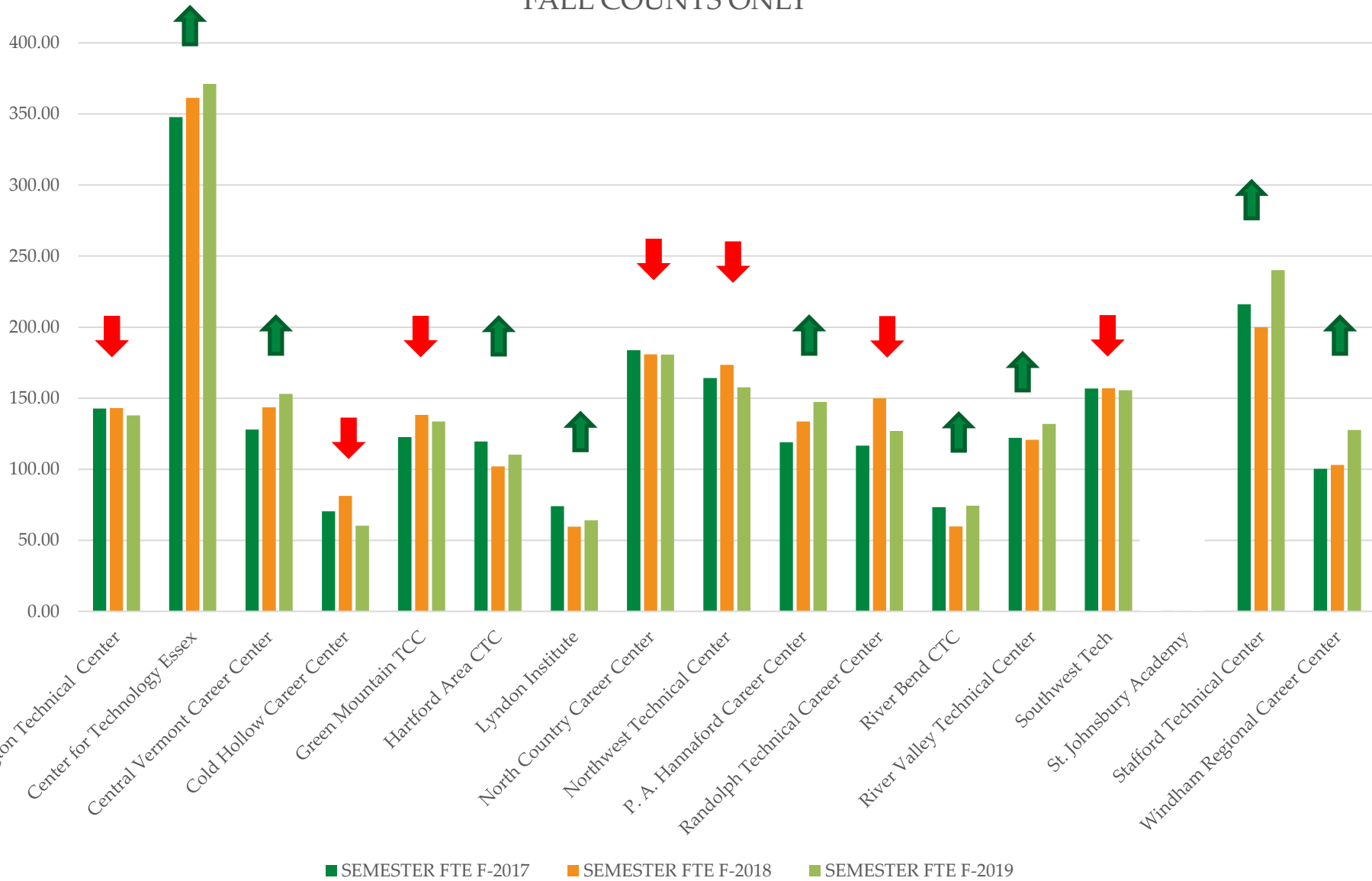
CTE Tuition

- CTE “Base” Funding
 - “full-time equivalent” student
 - Students split time between home high school and CTE
 - Rolling six semester average FTE x CTE tuition

4 Year – Six Semester Average
State Level

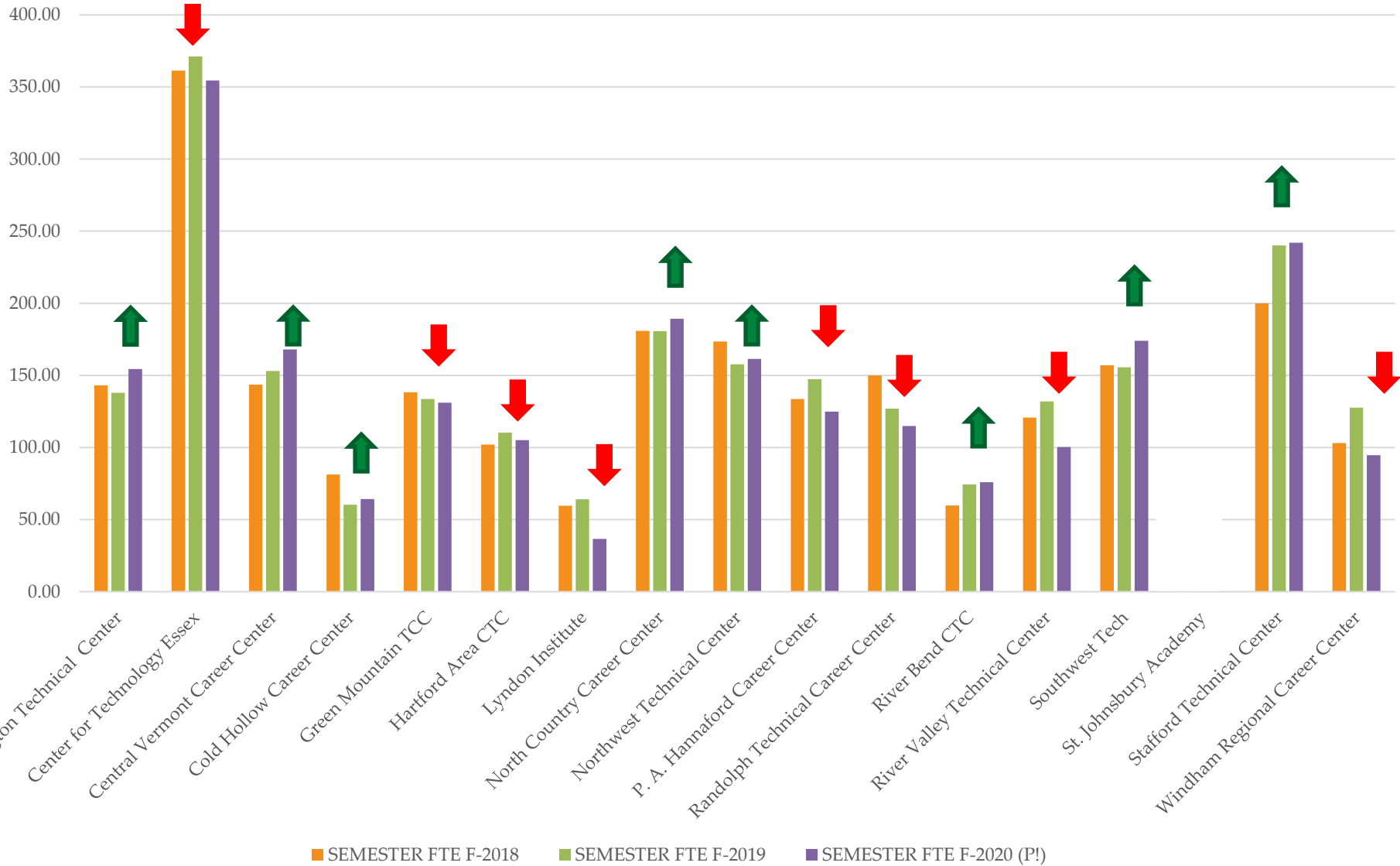


3-YR Pre-Pandemic FTE TRENDS FALL COUNTS ONLY



3 YR FTE – FALL COUNTS ONLY

First Pandemic Year



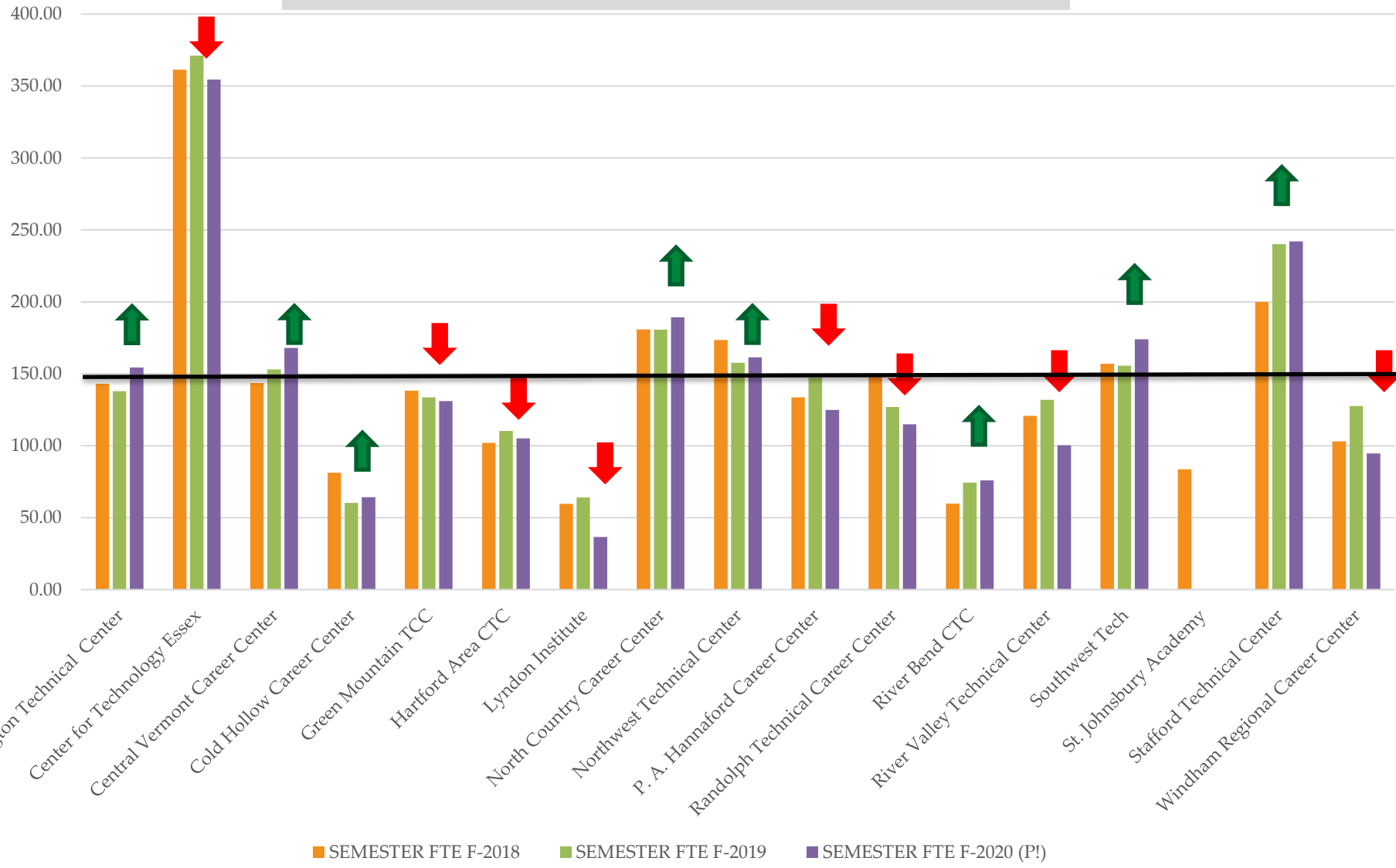
FY '22 Early Indicators

- Number of applications submitted
 - May 2019 compared to May 2021
- 7 centers - fewer applications
 - Range: -6 to -128
- 4 centers – more applications
 - Range: +9 to + 24
- 6 centers – not reported

Financial Impacts – State Supports

- Salary Assistance – Assistant Director
- Supplemental Assistance/Tuition Reduction (\$3,770/FTE [35% of base ed amount])

ADULT CTE SALARY ASSISTANCE THRESHOLD



Supplemental Assistance Estimates

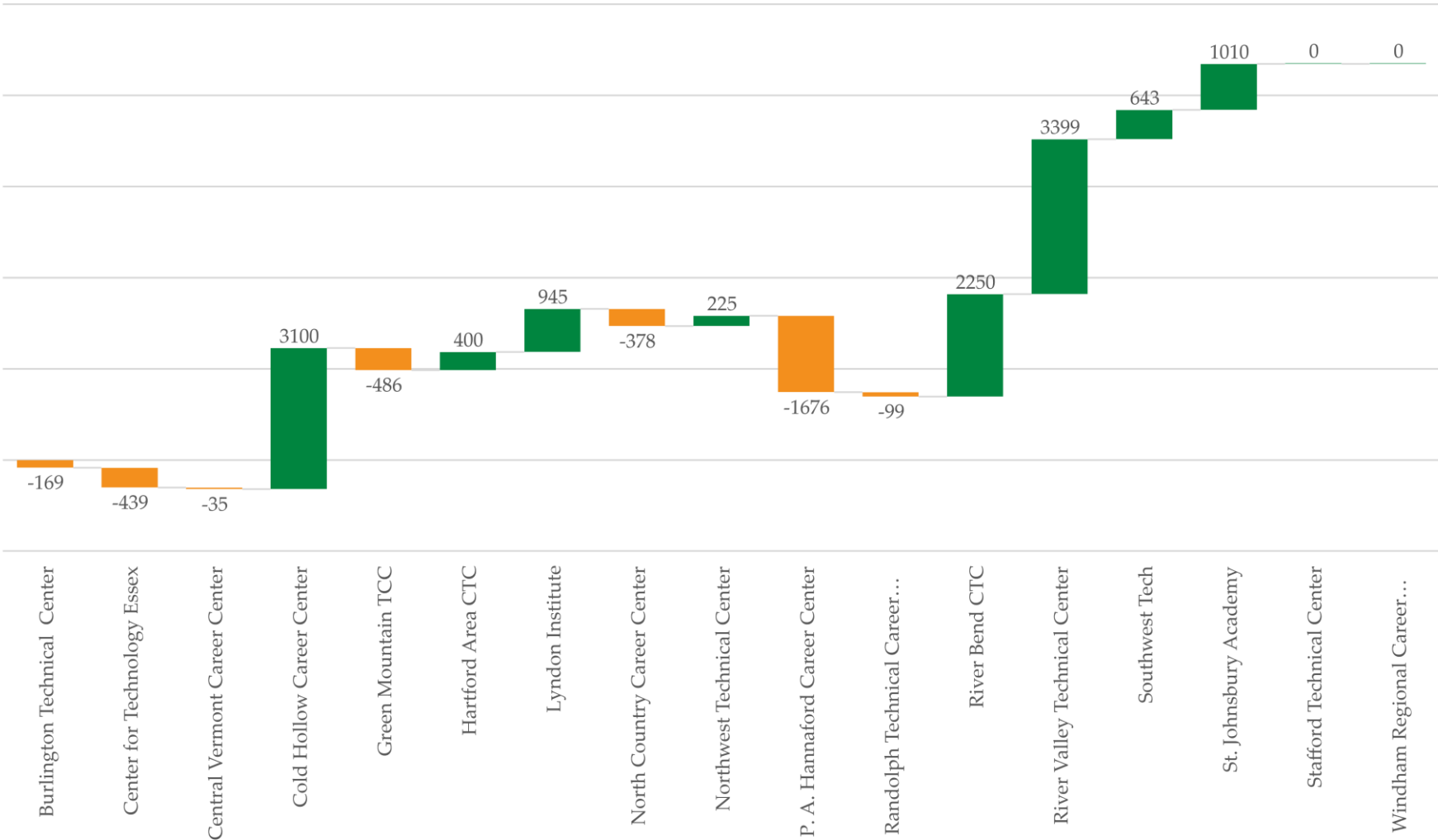
- Centers Losing Supplemental Assistance:
 - 6 (Cold Hollow, Hartford, Northwest, River Bend, River Valley, Windham)
 - Range: $-\$3,012.90$ - $-\$18,082.31$
- Centers Gaining Supplemental Assistance:
 - 9 (Burlington, Essex, Barre, Green Mtn., North Country, Hannaford, Randolph, Southwest, Stafford)
 - Range: $+\$2,859$ - $+\$27,531.58$

Financial Impacts – Local Tuition

- Rolling FTE average lasts until 2023-2024
- Declining FTEs =
 - Higher tuition if no change in program offerings
 - Fewer programs available

Changes in Announced Tuition FY'21 to FY'22

■ Increase ■ Decrease ■ Total



SOLUTIONS

- Short term
 - Working through multiple options, some of which may need Legislative intervention
- Longer term
 - Act 189 of 2018 – funding pilots
 - Act 189 Report Recommendations (pending)
 - Funding to support contracted consultants
 - Funding to support local implementation

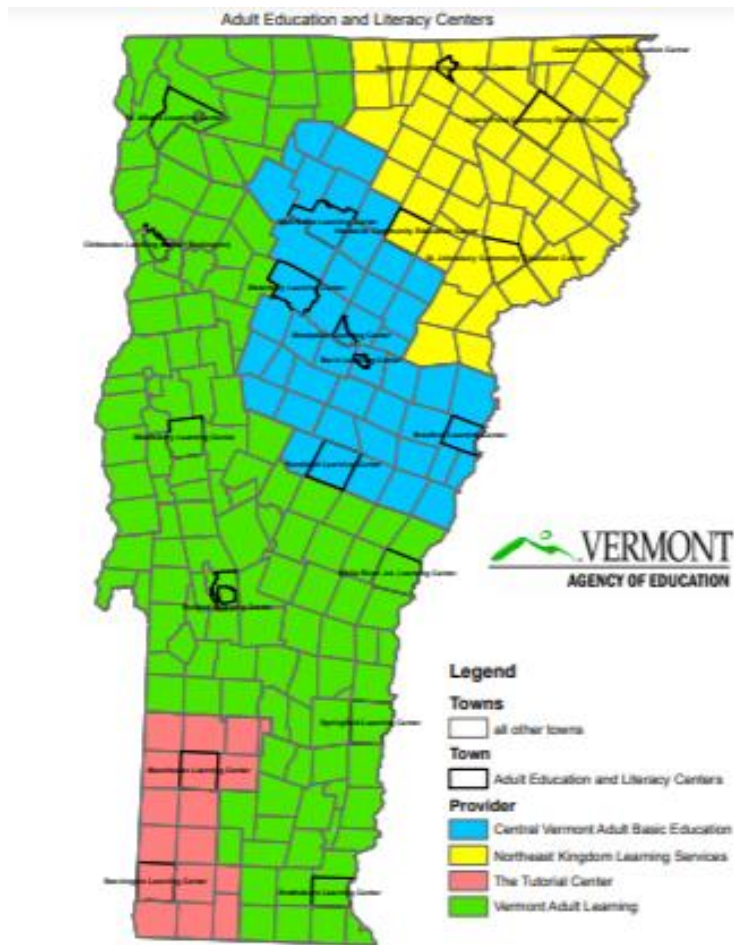
ADULT BASIC & SECONDARY EDUCATION

ADULT EDUCATION & LITERACY

Adult Education and Literacy (AEL) is a pathway to a diploma and a pathway to better employment.

The AEL system serves the most vulnerable Vermonters - those **adults who have less than a high school education.**

AEL DELIVERY



- 4 non-profit entities
 - Serve multiple towns
- State & Federal Grant Recipients
 - WIOA Title II
- State reimbursements
- Fees for services, donations, town appropriations

STATISTICS

2019 American Community Survey estimates there are approximately 32,276 people with less than a high school diploma in Vermont.

People Served:

– 2019-2020 year = **1,812**

– 2020-2021 year = **1,360**

Demographics

1,812 served

82% were between 16 and 44

33% were black, indigenous, or person of color

57% of were women

QUESTIONS?

Jay Ramsey
Assistant Director, Student Pathways Division
State Director, CTE

jay.ramsey@vermont.gov